



Cladded with stone, metal, glass or laminates, our steel doors can give a sophisticated look to any area.

Fire Rating: Up to 4 hours, under SS332:2018; BS 476:Part 22:1987; BS EN1634-1.

Door leaf: 47 mm thick door leaves formed from 1.5mm electrogalvanised (zinc coated) steel skins reinforced with internal C profile stiffeners engineered to support up to of 100 kg/m² of decorative material.

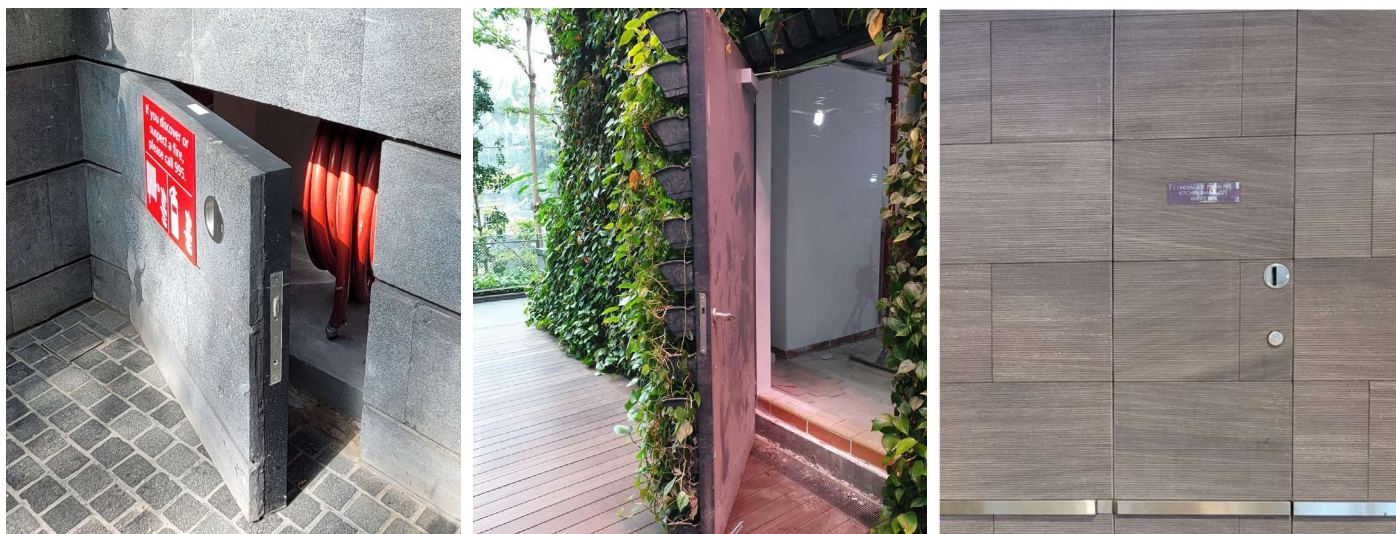
Frame: Formed from 1.5 mm electrogalvanised (zinc coated) steel, welded and finished smooth

Weight: Leaf ~40kg/m²
Combined panel & cladding weight of up to 300 kg/leaf.

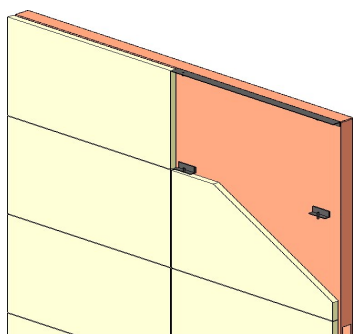
Max size: 2,700mm (W) X 2,700mm (H)

Hardware: Heavy duty butt hinges for inward opening doorsets.

Disclaimer: Design details of actual product may differ, subject to product improvements and approval requirements.

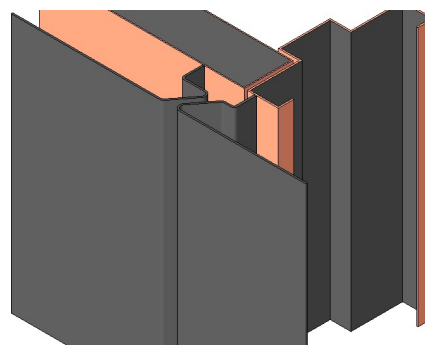


Cladded frameless door with concealed ironmongery. Door size and ironmongery are fully customizable.



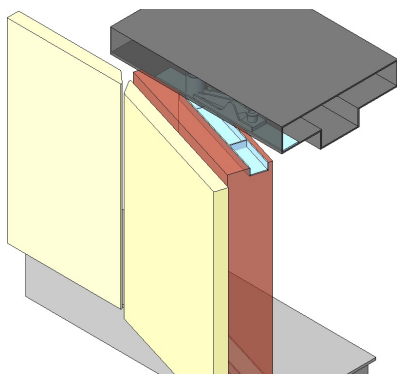
**UNLIMITED FINISHING
OPTIONS**

Clad with stone, glass, metal, laminates or Glass Fiber Reinforced Concrete (GFRC) Precast Components.



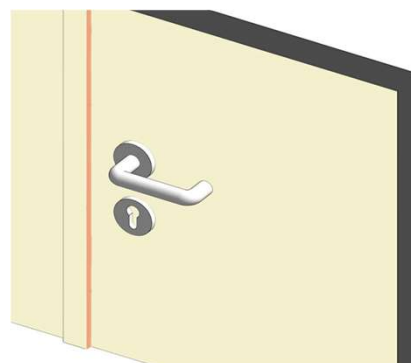
**4HR FIRE RATING
(SS 332:2018)**

Ceramic fiber infill for excellent insulation and heat resistant.



**PROPRIETARY
PIVOT HINGE**

Concealed pivot hinge for flushed finish.



**HUNDREDS OF
HARDWARE CONFIGS**

Extensive selection of ironmongery available, complete with fire test evidence and Certificates of Conformance.