

# ARCHITOURS '10

A flagship event of ArchiFest '10



## ABOUT ARCHIFEST '10



Singapore Institute of Architects (SIA) is organising the 4th ArchiFest this October. **ArchiFest '10** will be launched on 4 Oct (Mon) to coincide with World Architecture Day and the month long festival will include 4 key components - Forum, ArchiTours, Happy Cities Exhibition and Fringe Events by Festival Partners.

**ArchiFest '10** explores the possibilities of developing cities into an apparatus for 'Happiness'. The theme "**Happy Cities**" offers a glimpse of the bold new world that awaits us, ArchiFest proposes our measure of happiness, and shares solutions, even utopian ideals to enhance the development of our cities as sites for a thriving and sustainable urban, cultural and social life.

## ABOUT ARCHITOURS '10

Back by popular demand, the Institute will be organising a series of ArchiTours based on 5 different themes (**Architect and Designer Open Office, DomestiCity, IntricaCity, ComplixCity, VeloCity**). The **Architect and Designer Open Offices** tours will kick start the ArchiTours and these tours will take place on **17<sup>th</sup> September and 24<sup>th</sup> September**.

The DomestiCity, IntricaCity, ComplixCity, VeloCity ArchiTours will run on Saturdays in October. Do lookout for these others tours on our website ([www.archifest.sg](http://www.archifest.sg)) in late September.

## ARCHITECT AND DESIGNER OPEN OFFICES 17<sup>th</sup> September and 24<sup>th</sup> September

Recognising that Youths are the builders of tomorrow's city, this programme is specially catered for students of Secondary Schools, Junior Colleges & Tertiary institutions and members of the public who are interested to find out more about the life and career of an Architect or Designer by visiting Architects' / Designers' offices.

One of the objectives of the ArchiTours is for participants to gain a deeper understanding about the work of an Architect and Designer through a more personal interaction with the Architects and Designers themselves.

## TOUR ITINERARY

TOUR #1 & #3		TOUR #2 & #4	
9.00am	Gather at SIA Theatre <sup>+</sup> (Add: 79 Neil Road, Singapore 088904)	2.00pm	Gather at SIA Theatre <sup>+</sup> (Add: 79 Neil Road, Singapore 088904)
9.15am	Coach departs for 1 <sup>st</sup> Firm	2.15pm	Coach departs for 1 <sup>st</sup> Firm
9.50am	Presentation + Guided Tour of Office + Interaction Session (Q&A)	2.50pm	Presentation + Guided Tour of Office + Interaction Session (Q&A)
10.50am	Coach departs for 2 <sup>nd</sup> Firm	3.50pm	Coach departs for 2 <sup>nd</sup> Firm
11.30am	Presentation + Guided Tour of Office + Interaction Session (Q&A)	4.30pm	Presentation + Guided Tour of Office + Interaction Session (Q&A)
12.30pm	End of Tour Coach departs for SIA	5.30pm	End of Tour Coach departs for SIA

<sup>+</sup>Location Map available in registration form below.

## ARCHITECT AND DESIGNER FIRM PROFILE

### TOUR #1 17 September 2010 (Friday) 9.00AM – 12.30PM

#### DP ARCHITECTS PTE LTD

(<http://www.dpa.com.sg>)



DP Architects (DPA) started as Design Partnership in 1967 and evolved to the present private limited company in 1993. The firm was founded with a deep concern for the built environment and the need for a conscious effort towards creating architecture of excellence where the enrichment of the human experience and spirit are reflected in both its planning and architectural work. The DP Group of Companies has established its presence globally as a premier architectural firm – providing a range of services from architecture, urban planning, and interior design through *DP Design*; and project management with *DP Consultants*. The group has expanded to address Structural and Mechanical integration through DP Engineers; and Landscaping and Environmental with *DP Green*. Worldwide, the DP Group has proven track record with its multifarious projects designed and implanted. The guiding principle of DPA is people-centric and we are constantly motivated by our motto – Excellence by Design. To make a better world, DP Architects has made livability and sustainability key themes in all its design aspirations. We will be consolidating our “green” expertise to offer clients the appropriate service and help create a greener and liveable environment. As testimonies to the firm’s commitment to purposeful architecture sensitive to regional context and needs, DPA has also won numerous design-awards internationally, for many major projects of all scales and types that we have undertaken in the last four decades.

#### WOHA ARCHITECTS PTE LTD

(<http://www.wohadesigns.com>)



WOHA is a design practice focused on the built environment. WOHA’s philosophy is to explore the intersections of culture, context, history, nature, climate, sustainability and social behaviour to inform innovative design. Formed in 1994 by Singaporean Wong Mun Summ and Australian Richard Hassell, the practice is based on the model of the creative industries, rather than traditional construction services. With a mix of designers from diverse backgrounds, WOHA explores integrated design for the built environment, moving between master planning, architectural, landscape, interior and lighting and furniture design. WOHA has no fixed formal language or style; instead each project evolves around a set of objectives and strategies that emerge from within the project. What does unite the works of the practice is a focus making spaces that delight the end-user and enhance the environment. WOHA recently received 2 World Building Titles at the World Architecture Festival 2009 in Barcelona.

WOHA has offices in Singapore and Thailand, and has been involved in projects around the Asia Pacific region. WOHA’s focus on innovation and diversity of interests has developed experience in a wide mix of building types and scales, including commercial, residential, hospitality, transport, infrastructure, institutional, religious, mixed-use and interior projects.

WOHA also participates in professional and educational activities. Both Founding Directors have served on public boards, committees and councils in Singapore, lectured and examined in universities. WOHA runs a gallery that hosts a programme of cultural events relating to architecture and design.

### TOUR #2 17 September 2010 (Friday) 2.00PM – 5.30PM

#### FORUM ARCHITECTS PTE LTD

(<http://www.forum-architects.com>)



Forum Architects is an architectural practice based in Singapore. It was founded by Tan Kok Hiang and Ho Sweet Woon in 1994. Kok Hiang and Sweet Woon both graduated from the National University of Singapore in 1987. Their early training under well known Singaporean architects, William Lim and Tay Kheng Soon instilled a deep concern about building in context, the environment and public engagement in architecture.

Forum has won more than 30 awards. Their recent project, Maxwell Chambers won the Chicago Anthaneum Award 2010.

The Assafaah Mosque was exhibited in Venice Biennale 2004 and also won the Architecture+ Award held in Dubai in 2004 and the Chicago Anthaneum Award in 2008. The Assafaah Mosque examines spirituality in architecture and seeks a contemporary expression for mosques in Asia at a time when any allusion to Middle-Eastern brand of Islam was not desired. Amongst other award winning projects are Henderson Community Club (1999), Wilby House (2000), Boon Tat Street Offices (2001), Bukit Timah NUS Law Faculty (2007) and the Singapore Embassy in Philippines won an Honorary Mention in the Singapore’s President’s Design Award in 2008. More than 80 regional and international articles have been published on their works including three projects in the Phaidon Atlas of 21st Century Architecture.

Forum Architects are currently working on projects in Singapore, the Asia Pacific and the Middle East.

#### ONG&ONG PTE LTD

(<http://www.ong-ong.com>)



With a track record of almost 40 years in the industry, ONG & ONG has earned an unparalleled reputation for servicing our clients with creativity, excellence and commitment.

One & Ong offers a complete 360° solution – i.e. a parceled cross-discipline integrated solution, encompassing all aspects of the construction business. This three-pronged solution encompasses design (architecture, urban planning, landscape, graphics and interior design), engineering (civil, structural, electrical and mechanical) and management (development, project, construction and place).

We are an ISO 14001 certified practice with offices in Singapore, China, Vietnam, India, Malaysia and the USA. In-depth knowledge of the local context, culture and regulations allow us to better understand our clients’ needs to enable us to meet and exceed their expectations

### **TOUR #3 24 September 2010 (Friday) 9.00AM – 12.30PM**

#### **CPG CONSULTANTS PTE LTD**

(<http://www.cpgcorp.com.sg>)



CPG Consultants is a subsidiary of CPG Corporation (CPG Corp), one of the leading providers of development and management services for the infrastructure and building industry. Headquartered in Singapore with offices in China, India, Vietnam, Philippines, Macau and the Middle East, CPG Consultants provides the full spectrum of professional design and development consultancy services including master planning and urban design, architectural design & consultancy, green design, civil & structural engineering, mechanical & electrical engineering, environmental & transportation engineering and quantity surveying services. Our diverse portfolio in over 20 countries includes airports, cultural, arts & heritage institutions, educational & research facilities, healthcare facilities, residential projects, industrial projects, infrastructural facilities, office & commercial complexes, and sports & recreational facilities.

Some of CPG Consultants' notable Singapore projects include the Singapore Racecourse, Changi Airport Terminals 1, 2 and 3, Gardens by the Bay, Khoo Teck Puat Hospital, National Museum of Singapore, DUKE-NUS Graduate Medical School, Nanyang Technological University – School of Arts, Design and Media and Pan Pacific Serviced Suites, to name a few. Our projects have also won many local and international design and engineering awards, a testament to our professional and reliable services.

#### **MINISTRY OF DESIGN**

(<http://www.modonline.com>)



Ministry of Design was created by Colin Seah to Question, Disturb & Redefine the spaces, forms and experiences that surround us and give meaning to our world.

An integrated spatial-design practice, MOD's explorations are created amidst a democratic 'studio-like' atmosphere and progress seamlessly between form, site, object and space. MOD loves to question where the inherent potential in contemporary design lies, and then to disturb the ways they are created or perceived – redefining the world around us in relevant and innovative ways.

MOD has been named a Rising Star of Architecture by MONOCLE, won the Gold Key Award, the International Design Awards and the President's Design Award twice over. True to their multi-disciplinary profile, they have also won the Grand Prize in Saporiti Italia's Luxury Tower design competition; manufactured for display at the prestigious Milan Design Week 2010.

MOD's integrated spatial design approach has resulted in wide-ranging local and foreign projects such as the New Majestic Hotel, Sho-U Restaurant, Ashley Isham Boutique, BBH Office in a Warehouse, Lien Residence, Face to Face, The Club, The Race Club, Hyatt Hotel Seoul & being a finalist in The Singapore Pavilion World Expo 2010 Shanghai.

### **TOUR #4 24 September 2010 (Friday) 2.00PM – 5.30PM**

#### **SCDA ARCHITECTS PTE LTD**

(<http://www.scdarchitects.com>)



SCDA ARCHITECTS has won many design awards including The Royal Institute of British Architects Worldwide Award 2005 for Lincoln Modern, the ar+d 2002 Emerging Architecture Award – Highly Commended for House in Malacca, and the Golden Award – National Integrated Design Award, China for Lakeside Ville and was also selected by the Architectural Record (USA) as one of the Year 2003 Design Vanguard firms. It has also won many numerous local design awards.

SCDA ARCHITECTS is a multi-disciplinary architectural practice established in 1995. The office currently employs a staff of 60, 36 of whom are architects, 8 interior designers and 3 landscape designers. It has a holistic approach to Architecture that includes full interior design, landscape and planning services. The practice has extensive experience with private residences, resort hotels, apartments and commercial buildings and is working on projects both locally and regionally.

#### **FARM**

(<http://www.farm.sg>)



FARM is many things at once. They are a cross disciplinary design practice. They are a curatorial team. They are a community-centred arts organization. They call themselves FARM because they would like to cultivate a culture of imagination. Underpinning all they do is a belief that joyful creativity is essential in all our lives. FARM endeavours to share with you that delight in each of our projects.

Since 2005, Farm has worked on community projects which promote the arts. They organise national public art competitions and events and run an online creative portal. They also arrange free quarterly talks by designers and artists. In 2007, FARM established its cross disciplinary design arm. In collaboration with artists and designers, they worked on a diverse range of projects. These include architecture & interior design, product design & merchandising, graphic design & branding, art installation & sculpture, exhibition design & curatorial work.

### **ENQUIRIES**

**For enquiries, please contact:**

**Singapore Institute of Architects** T: +65 6226 2668 | E : [archifest@sia.org.sg](mailto:archifest@sia.org.sg) | URL: [www.sia.org.sg](http://www.sia.org.sg)

**For more information on ArchiFest and ArchiTours, please visit [www.archifest.sg](http://www.archifest.sg)**



## Registration Form for ArchiTours '10

(For Single & Multiple Registrations)

Choice of Sites	
Please indicate your preferred tour by placing a tick in the box on its left.	
<div style="text-align: center; font-size: small; color: #00A0C0;">Tour #1</div> <div style="text-align: center; font-size: x-small;">Date: 17 September (Fri)</div> <div style="text-align: center; font-size: x-small;">Time: 9.00am – 12.30pm</div> <div style="text-align: center; margin-top: 10px;"> <input type="checkbox"/> </div> <div style="text-align: center; font-size: small;"> <b>1. DP Architects</b>  <b>2. WOHA Architects</b> </div>	<div style="text-align: center; font-size: small; color: #00A0C0;">Tour #3</div> <div style="text-align: center; font-size: x-small;">Date: 24 September (Fri)</div> <div style="text-align: center; font-size: x-small;">Time: 9.00am – 12.30pm</div> <div style="text-align: center; margin-top: 10px;"> <input type="checkbox"/> </div> <div style="text-align: center; font-size: small;"> <b>1. CPG Consultants</b>  <b>2. Ministry of Design</b> </div>
<div style="text-align: center; font-size: small; color: #00A0C0;">Tour #2</div> <div style="text-align: center; font-size: x-small;">Date: 17 September (Fri)</div> <div style="text-align: center; font-size: x-small;">Time: 2.00pm – 5.30pm</div> <div style="text-align: center; margin-top: 10px;"> <input type="checkbox"/> </div> <div style="text-align: center; font-size: small;"> <b>1. Forum Architects</b>  <b>2. Ong&amp;Ong Pte Ltd</b> </div>	<div style="text-align: center; font-size: small; color: #00A0C0;">Tour #4</div> <div style="text-align: center; font-size: x-small;">Date: 24 September (Fri)</div> <div style="text-align: center; font-size: x-small;">Time: 2.00pm – 5.30pm</div> <div style="text-align: center; margin-top: 10px;"> <input type="checkbox"/> </div> <div style="text-align: center; font-size: small;"> <b>1. SCDA Architects</b>  <b>2. FARM</b> </div>

Tour Price (prices include GST)		
Category	Adult	Student*
Per Tour #1 / #2 / #3 / #4	S\$30.00 per person	S\$20.00 per student
Same Day Package <ul style="list-style-type: none"> <li>17 Sept (Tour #1 &amp; #2) or</li> <li>24 Sept (Tour #3 &amp; #4)</li> </ul>	S\$50.00 per person (per day)	S\$35.00 per student (per day)

\* Student category applicable to full time student only. Please attach applicant's student ID to registration form.

Contact Person		
Salutation MR / MRS / MS / DR / OTHERS*: <small>*Delete where inapplicable</small>		
First Name:	Last Name (Surname):	
Address:		
State:	Postal Code:	Country:
Phone (mobile):	Office Number:	Fax Number:
Email:		

No.	Name	NRIC / Passport No.	Tour Date and Time (*pls circle)				Price (*pls circle)	
			17 Sept		24 Sept		Student	Adult
1.			AM	PM	AM	PM	\$20 / \$35	\$30 / \$50
2.			AM	PM	AM	PM	\$20 / \$35	\$30 / \$50
3.			AM	PM	AM	PM	\$20 / \$35	\$30 / \$50
4.			AM	PM	AM	PM	\$20 / \$35	\$30 / \$50
5.			AM	PM	AM	PM	\$20 / \$35	\$30 / \$50
<b>Total:</b>							<b>\$</b>	

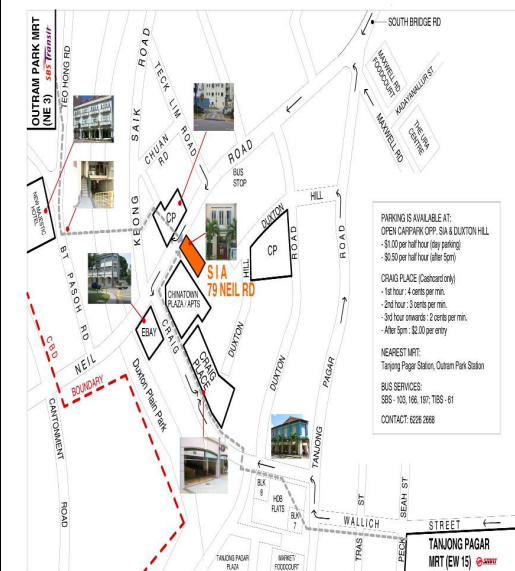
Please tick your payment mode:

<input type="checkbox"/> By Cheque / Bank Draft**  <p>** For payment using Bank Draft, please include an <b>additional S\$25</b> for transaction fee.</p> <p>Bank/Chq # : _____</p> <p>Amt S\$: _____</p> <p>Local Cheque (must be drawn in Singapore) should be crossed and made payable to <b>"Singapore Institute of Architects"</b>.</p> <p>Please include the registration form with your cheque / bank draft and mail to:  <b>Singapore Institute of Architects</b>  <b>79B Neil Road, Singapore 088904</b></p>	<input type="checkbox"/> By Telegraphic Transfer (TT)  <p>Please include an <b>additional S\$25</b> for transaction fee.</p> <p><b>Kindly transfer to:</b>  The Development Bank of Singapore Ltd  6 Shenton Way, DBS Building, Singapore 068809</p> <p>Bank Swift Code: DBS SSGSG  Telex: RS24455  Beneficiary: Singapore Institute of Architects  A/C: 009-015813-8</p> <p><b>Payment Details: ArchiTours (please also indicate either firm or applicant's name)</b></p> <p><b>To facilitate tracking of tour registration, please email participant's name and a copy of the remittance advice to <a href="mailto:archifest@sia.org.sg">archifest@sia.org.sg</a></b></p>
<input type="checkbox"/> By Cash  <p>You can drop by the SIA office to make cash payment between 9.30am and 5.30pm on weekdays.</p> <p><b>Address:</b>  <b>Singapore Institute of Architects</b>  <b>79B Neil Road, Singapore 088904</b></p>	

## PAYMENT INSTRUCTIONS AND NOTES

- Mail your cheque/bank draft to SIA or make cash payment at SIA. All payments should be accompanied by a completed registration form for us to trace your registration.
- Registration is only confirmed upon receipt of both registration form and full payment.
- Registration is on a first-come-first-served basis, so please register early as there are limited places available.
- We seek your understanding that no refund will be made upon full payment received, or for "no show" participants.
- Substitution is allowed; please send a written request to SIA at [archifest@sia.org.sg](mailto:archifest@sia.org.sg) by 13 September 2010 (Mon).
- Where an adult replaces a student, the fee difference will have to be made good to SIA prior to the event.
- All tours will start and end at the SIA (unless participants indicate that they will like to leave directly from the site).
- Due to limited capacity, an alternative date/tour may be suggested to you should your preferred date become unavailable.*

## LOCATION MAP (MEETING POINT)



Organised by:



Main Partners:



An event of:

